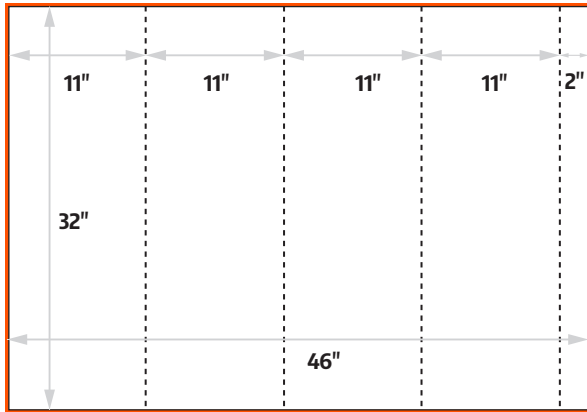


Build Your File

46" x 32" 4 Sided Bollard
(include .25" bleed around)

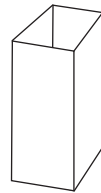


46.5"
w/bleed

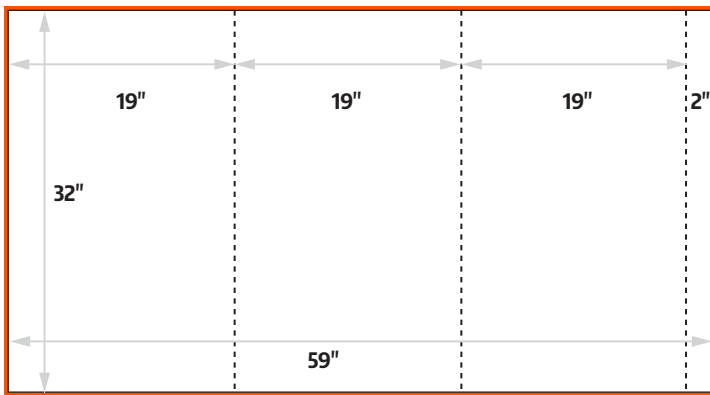
46" x 32" 4 Sided

□ Trim size (w x h)	46" x 32"
■ Bleed size (w x h)	46.5" x 32.5"

32.5"
w/bleed



59" x 32" 3 Sided Bollard
(include .25" bleed around)



59.5"
w/bleed

59" x 32" 3 Sided

□ Trim size (w x h)	59" x 32"
■ Bleed size (w x h)	59.5" x 32.5"

32.5"
w/bleed



Custom Sizes

- 4MM Coroplast with tape on flap for installation.

Design Assistance

- Our design staff can create your graphics. Contact us for a quote.

Accepted Files



- All files containing rasterized (photo) graphics must be acceptable resolution. Any linked graphic files should be included. All fonts converted to outlines or included with file.
- **We do NOT accept or support these formats:** .doc, .xls, .ppt, .pub, or .cdr files.

Art Requirements

- All photos: minimum 100 dpi at 100% scale
- Adobe vector files accepted at any scale
- Include 1/4" (.25) inch bleed around
- All files: CMYK format
- Keep all essential text or graphics within the "safe area" of any print (See charts at left)
- Do not use crop or registration marks on file

Send It

- For formats other than high resolution PDF, please include all support files (eps, tiff, jpeg, etc.)
- Convert fonts to outlines

Files less than 5 MB, email to:
art@inviewgraphics.com

Files larger than 5 MB, please send via:
inview-graphics.wetransfer.com

- Files delivered via CD, DVD or flash thumb drives will not be returned.

Proofs & Delivery

- Electronic proofs always provided at no cost
- Additional charges apply for printed proofs
- Standard Production time on most orders is 3 to 5 business days
- Items shipped FedEx Ground unless otherwise specified by customer

