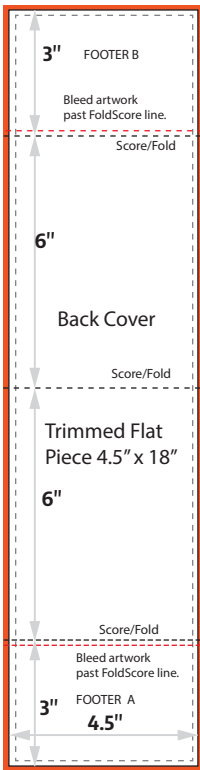
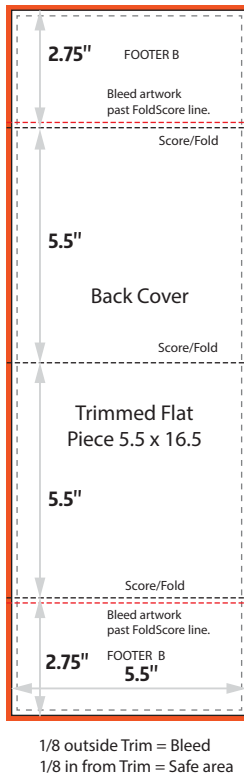


### Build Your File

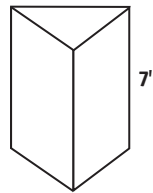
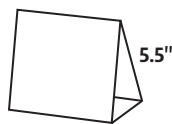
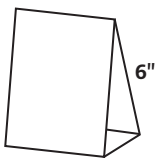
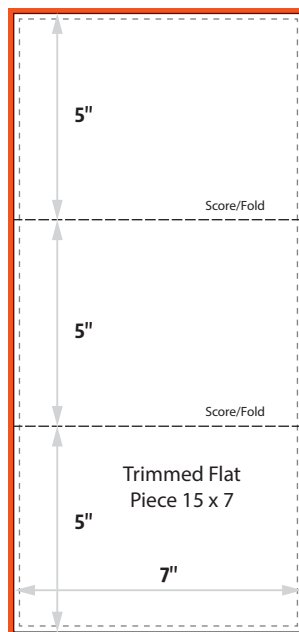
4.5" x 6" Example



5.5" x 5.5" Example



5" x 7" Example



1/8 outside Trim = Bleed  
1/8 in from Trim = Safe area

#### TABLE TENTS GRAPHICS

4.5" x 6"

<input checked="" type="checkbox"/>	Bleed size (w x h)	4.625" x 18.125"
<input type="checkbox"/>	Trim size (w x h)	4.5" x 18"
<input type="checkbox"/>	Safe area (w x h)	4.25" x 17.75"

5.5" x 5.5"

<input checked="" type="checkbox"/>	Bleed size (w x h)	5.625" x 16.625"
<input type="checkbox"/>	Trim size (w x h)	5.5" x 16.5"
<input type="checkbox"/>	Safe area (w x h)	5.25" x 16.25"

5" x 7"

<input checked="" type="checkbox"/>	Bleed size (w x h)	15.25" x 7.25"
<input type="checkbox"/>	Trim size (w x h)	15" x 7"
<input type="checkbox"/>	Safe area (w x h)	14.75" x 6.75"

### Accepted Files



- All files containing rasterized (photo) graphics must be acceptable resolution. Any linked graphic files should be included. All fonts converted to outlines or included with file.
- We do NOT accept or support these formats:** .doc, .xls, .ppt, .pub, or .cdr files.

### Art Requirements

- All photos: minimum 100 dpi at 100% scale
- Adobe vector files accepted at any scale
- Please include 1/8-inch bleed around (.125")
- All files: CMYK format
- Keep all essential text or graphics within the "safe area" of any print (See charts at left)
- Do not use crop or registration marks on file

### Send It

- For formats other than high resolution PDF, please include all support files (eps, tiff, jpeg, etc.)
- Convert fonts to outlines

Files less than 5 MB, email to:  
**art@inviewgraphics.com**

Files larger than 5 MB, please send via:  
**inview-graphics.wetransfer.com**

- Files delivered via CD, DVD or flash thumb drives will not be returned.

### Proofs & Delivery

- Electronic proofs always provided at no cost
- Additional charges apply for printed proofs
- Standard Production time on most orders is 3 to 5 business days
- Items shipped FedEx Ground unless otherwise specified by customer

### Print Materials

#### Table Tent Graphics

- Heavyweight coated paper stock.
- Other sizes available. Contact us for pricing.**

### Design Assistance

- Our design staff can create your graphics. Contact us for a quote.

